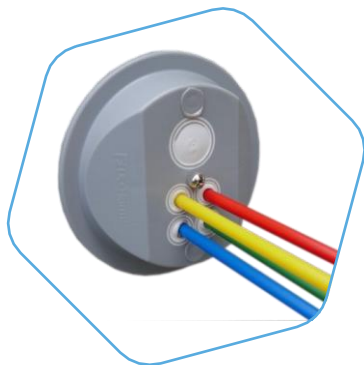


DuraHouse Lead-In Underground



PRODUCT DESCRIPTION

DuraHouse Lead-In Underground is designed for gas- and water-tight sealing of a building entry point in FTTH applications. Suitable for use with up to 4 MicroDucts and cables.

APPLICATION AREA

For use with MicroDucts in direct-buried installations

MAIN CHARACTERISTICS

Material

Cover:	Glass fibre reinforced Polyamide (PA)
Seal:	Low expansion Polyurethane (PU) foam resin type 2234

Temperature

Transport and storage:	-20 °C to +60 °C
Installation:	-15 °C to +45 °C
Operation:	-20 °C to +40 °C

Standards

Sealing:	DIN 18533
----------	-----------

Pressure

Burst:	2 bar for 24 hours
Working:	1 bar

Others

UV-Resistant:	No
Operational lifetime:	25 years

TECHNICAL DATA SHEET: ACCESSORIES

PRODUCT VARIATIONS

Material Description	Packaging (pcs)	SAP code
Dura House Lead-In Underground Multi 4 x 4-8 mm	10	20020392
DuraHouse Lead-In Underground Multi 4 x 12.5 / 1 x 20 mm	10	20020393
DuraHouse Lead-In Underground Single 14-20 mm	10	20020363
DuraHouse Lead-In Underground Single 4-12 mm	10	20020066